



Western Michigan University

Y 6 7 8 9 10 11 12 13 14 15 16 17 18 19 20 21 22 23 24 25 26 27 28 29 30 31 32 33 34 35 36 37 38 39 40 41 42 43 44 45 46 47 48 49 50 51 52 53 54 55 56 57 58 59 60 61 62 63 64 65 66 67 68 69 70 71 72 73 74 75 76 77 78 79 80 81 82 83 84 85 86 87 88 89 90 91 92 93 94 95 96 97 98 99 100

fl 6 7 8 9 10 11 12 13 14 15 16 17 18 19 20 21 22 23 24 25 26 27 28 29 30 31 32 33 34 35 36 37 38 39 40 41 42 43 44 45 46 47 48 49 50 51 52 53 54 55 56 57 58 59 60 61 62 63 64 65 66 67 68 69 70 71 72 73 74 75 76 77 78 79 80 81 82 83 84 85 86 87 88 89 90 91 92 93 94 95 96 97 98 99 100

Specific Course Requirement Semester Hours

Table with 2 columns: Course Name, Semester Hours. Rows include English (6), Psychology (3), Social Science/ Humanities* (15), Biology with accompanying labs** (6), Chemistry with accompanying labs*** (12), Physics with accompanying labs**** (6).

*The Social Science/ Humanities requirement may be satisfied by one of the following categories: Social Sciences: Anthropology, Criminal Justice, Economics, Geography, Government, History, Psychology, Sociology, Political Science, Human Services, Communication, Dance, Drama, English, Film, Foreign Language, Journalism, Language, Literature, Music, Philosophy, Religion, Speech, Theater.

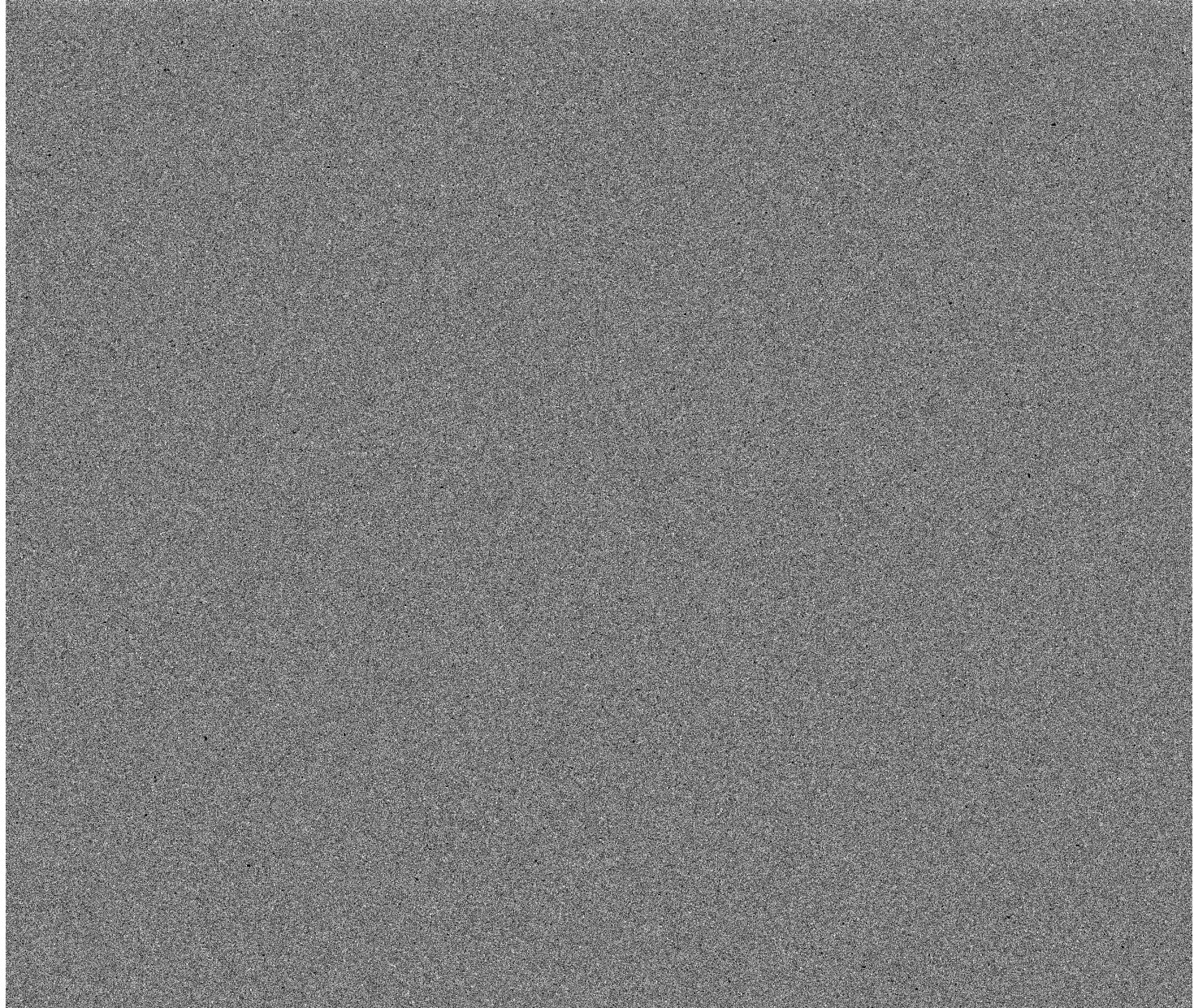
**The Human Biology, Anatomy, Physiology requirement may be satisfied by one of the following categories:

***The General Biology requirement may be satisfied by one of the following categories: Biology, Biochemistry, Biophysics, Botany, Cell Biology, Developmental Biology, Ecology, Evolutionary Biology, Genetics, Immunology, Microbiology, Molecular Biology, Neuroscience, Plant Biology, Population Biology, Systematics, Zoology.

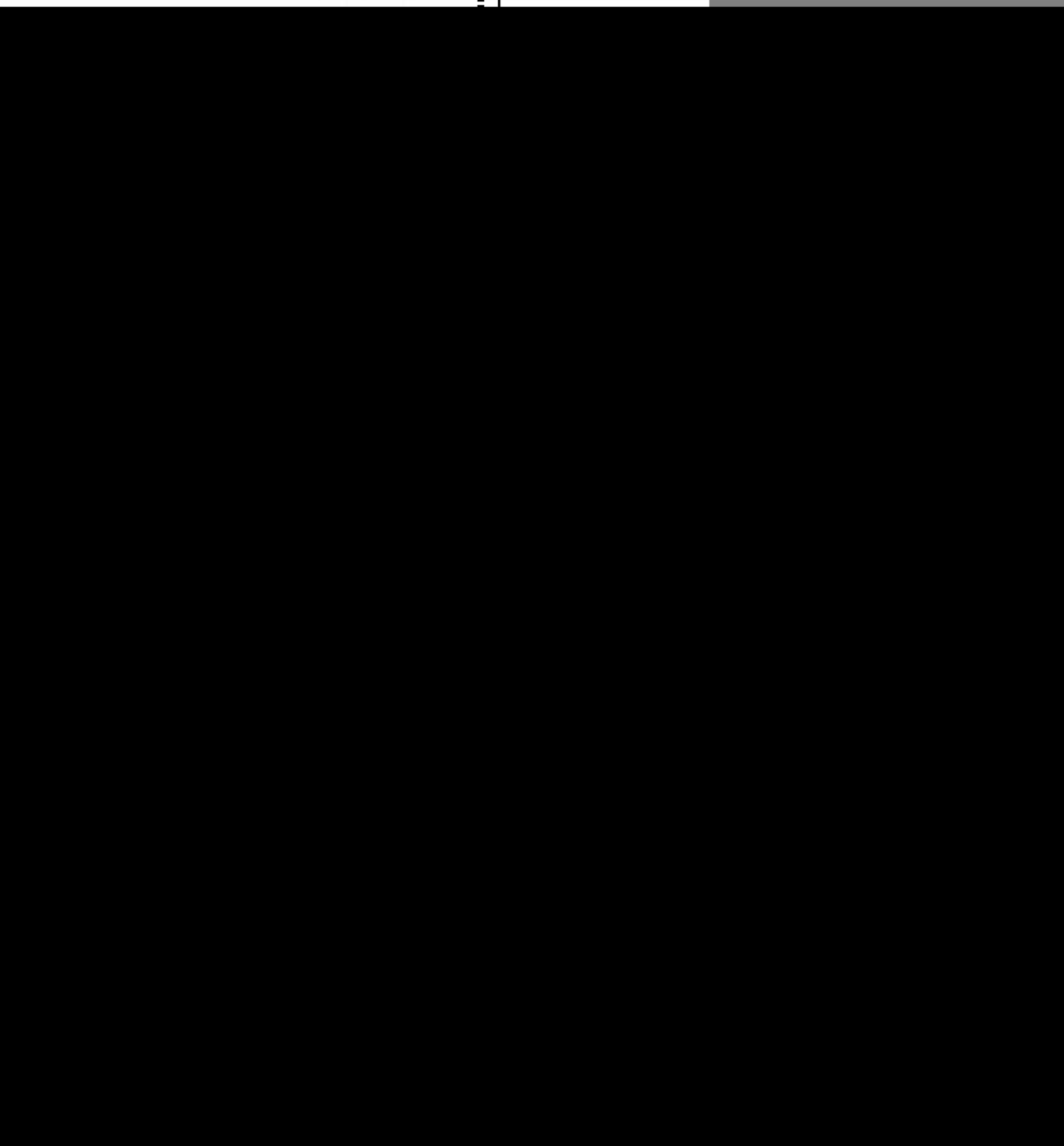
****The Physics requirement may be satisfied by one of the following categories: Physics, Astronomy, Astrophysics, Atmospheric Science, Earth Science, Environmental Science, Geology, Marine Science, Meteorology, Oceanography, Planetary Science, Space Science, Solar System Science, Terrestrial Science, Universe Science.



--	--	--	--	--	--	--	--	--	--



Any courses above not completed at Northwestern Michigan College may be completed at Lif University prior to admission to the chiropractic



F. WAIVERS OR SUBSTITUTIONS

Any waiver or substitution of coursework at NORTHWESTERN MICHIGAN COLLEGE must have prior approval by LIFE

ARTICULATION AGREEMENT
NORTHEASTERN MICHIGAN COLLEGE
LIFE UNIVERSITY
Prerequisite course at NORTHEASTERN MICHIGAN COLLEGE
To attend the chiropractic program at LIFE UNIVERSITY

IN WITNESS WHEREOF, this Articulation Agreement has been executed in duplicate
this 10th day of February, 2010.

LIFE UNIVERSITY

Dr. Rob Scot
Vice President

